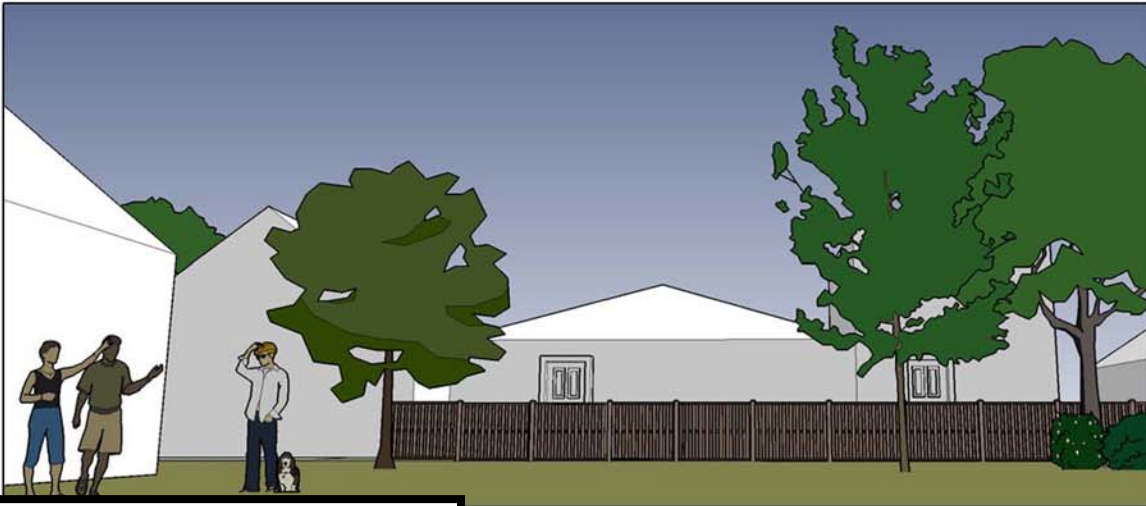


**OVERLAY  
ALLOWED  
DEVELOPMENT**  
-----  
**MAX BUILDOUT**

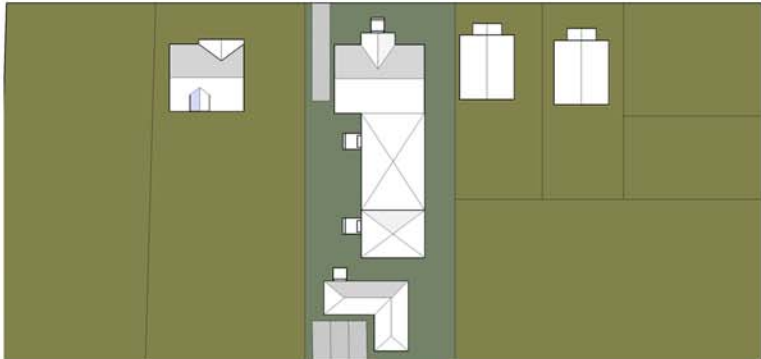


**Three new apartments:  
Two are 3,185 square feet  
each and one is 780 s.f.**  
-----  
**Note: This model is from an  
early version of the  
preliminary draft and may not  
reflect final proposal**





# /HN OVERLAY, NORMALIZED



**Three new apartments:  
Two are 1,200 square feet  
each and one is 780 s.f.**

-----

**Note: This model is from an  
early version of the  
preliminary draft and may not  
reflect final proposal**

