

Full 30-Year Vision for Parks and Recreation

Capital Project List with Draft Priorities

March 8, 2017

This project list is comprised of approximately 250 separate projects that support the community's full 30-year vision for Parks and Recreation in Eugene. The community's vision was reached through two-years of extensive engagement with the public and over 10,000 individual's providing input. A range of techniques were used to solicit this input including:

- Picture Your Parks newsletter (mailed to 83,000 Eugene households)
- *Little Red* pop-up tour (40 locations/events over two years)
- Online surveys
- Statistically valid surveys
- Latino Outreach
- Neighborhood meetings
- Stakeholder meetings
- Citizen Advisory Group
- Website/ e-newsletter

A few notes about how this information is presented:

1. The project list is organized geographically by planning district. Projects that cross multiple geographic planning districts are included in the "Citywide" list. There are six neighborhood planning districts (see accompanying map for planning district boundaries):
 - Bethel
 - City Central
 - River Road/ Santa Clara
 - South East
 - South West
 - Willakenzie
2. Each project has a Project #, a Project Description and a Draft Priority rating.
 - The Project # is used to cross reference projects with other lists and maps
 - The Project Description provides a brief explanation of the proposed project
 - The Draft Priority rating is an indication of the time-frame that the project is proposed for completion. A priority 1 rating is proposed for completion in the 1-5 year time frame, although this time-frame will ultimately be based on available funding. Projects with multiple ratings (i.e. 1/2/3), would be completed in a series of phases due to high dollar costs or projects that are more practically implemented over a number of years.

Projects have been prioritized based on triple bottom line considerations of social equity, environmental health and economic prosperity and criteria that supports the four principles which resulted from community input and have guided decision-making throughout this

process:

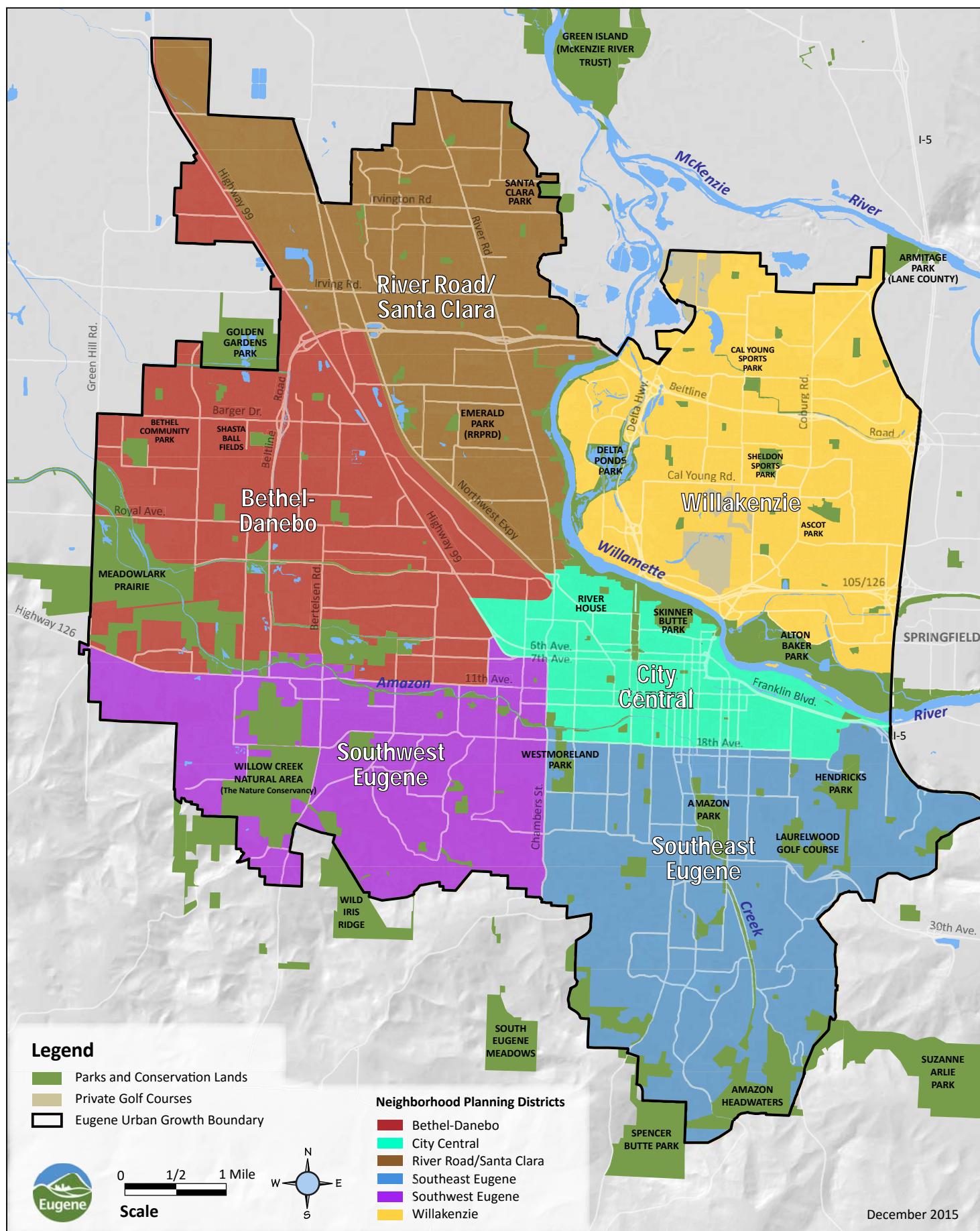
- ü Care for and make the most of what we have- Provide safe, clean and fun parks and recreation facilities, and enhance their value for the community to enjoy.
 - ü Serve the entire community- Provide equitable and welcoming access to parks and recreation facilities, regardless of neighborhood, culture, ability or income.
 - ü Create more connections- Build on Eugene's strong foundation of connected open spaces and trail networks by completing and making new connections to nature at the regional, city and neighborhood levels.
 - ü Build better partnerships- Forge new relationships and reinvent old partnerships across all sectors- to leverage resources and add value to Parks and Recreation services.
3. Projects that are related to the acquisition of new neighborhood parks, or the development of those parks once acquired, have a code associated with the project description. This code identifies the general geographic area that is identified for this new neighborhood park (see the accompanying Playground Equity Map for proposed locations).

The Playground Equity Map was developed to show areas in the City that are not currently within ½ mile safe walking distance to a park or school that has a children's playground. It should be noted that not all unserved areas are proposed for new park acquisition. Some areas can be better served through access improvements, such as crosswalk improvements, and are identified by code in the project description. And other areas were determined as low need due to population density, income, age of resident and proximity to other types of parkland such as natural areas.

4. Each planning area project list has a total project cost estimate. This dollar amount is based on individual project cost estimates that are high level and utilized for planning purposes only. Cost estimates will be refined on an individual project basis as scope and design considerations are further developed.

Neighborhood Planning Districts

Eugene Parks and Recreation System



DRAFT Prioritized Capital Project List

Citywide Projects

11/21/2016

1= 1-5yrs

2= 6-10 yrs

3= beyond

Project #	Project Description	DRAFT Priority
E1	Improve areas for informal family gatherings (Latino Engagement findings)	1
E2	Implement comprehensive signage improvements	1/2/3
E3	Install additional benches throughout system	1
E4	Develop and implement a city-wide irrigation system water management plan	1/2/3
E5	Develop and implement a comprehensive approach to locating inclusive play	1/2/3
E6	Update school playground usage agreements and partner to provide renovations as needed	1/2
E7	Develop and implement a city-wide restroom system master plan	1/2/3
E8	Develop and implement a comprehensive approach to locating multi-generational playgrounds/exercise equipment	1/2/3
E9	P'tetange Court improvements	2
E10	Pickleball Court conversion	1
E11	Neighborhood park lighting improvements	1/2/3
E12	Nature Education Center/ Event rental facility	3
E13	Riverfront equipment rental facility	3
E14	Plan and implement new wetland mitigation bank to support Envision Eugene	1
E15	River visioning project implementation to improve safe access to the Willamette River for swimming, fishing, paddling and nature viewing while maintaining or improving habitat for fish and wildlife	1/2/3
E16	Trails Plan Special Studies	1/2/3
E17	Amazon Creek water trail feasibility study	2
E18	Feasibility study of bicycle/ ped bridge over Willamette River to connect path system to Springfield	2
Total Planning Area Approximate Project Costs= \$26.8 million		

DRAFT Prioritized Capital Project List

Bethel Planning Area

11/21/2016

1= 1-5yrs
2= 6-10 yrs
3= beyond

Project #	Project Description	DRAFT Priority
B1	Acquire 2 new neighborhood park sites in underserved areas (Bc; Be)	2
B2	Golden Gardens Park general park development to serve Ba	1
B3	Grasshopper Meadow Park development	3
B4	Royal/Elizabeth Park development	3
B5	Build 2 new neighborhood park sites in underserved areas (Bc; Be)	3
B6	Lark Park major renovation	2
B7	State Street Park major renovation	2
B8	Trainsong Park major renovation	1
B9	Bethel Community Park rehabilitation	2
B10	Petersen Park rehabilitation	2
B11	Irwin Park rehabilitation	2
B12	Mangan Park rehabilitation	3
B13	Enhance and provide interpretation for Bethel Community Park wetland	2/3
B14	Golden Gardens Park habitat restoration	2/3
B15	Fir Butte habitat restoration (BLM)	1
B16	Willamette Daisy Meadow and Green Hill to Fern Ridge habitat restoration	2
B17	Habitat renovation at priority West Eugene Wetland sites (Meadowlark Prairie, Dragonfly Bend)	1/2/3
B18	Bethel Community Park spray play	1
B19	Build playground at Echo Hollow Pool to serve Bd	1
B20	Improve access to Irwin Park from Bb	1
B21	Improve access to Malabon Elementary playground to serve Bd	1
B22	Improve access to Petersen Park to serve Bf	1
B23	Petersen Park community garden	2
B24	Golden Gardens sports complex	2/3
B25	Meadowview turf field replacement (Bethel SD)	1
B26	Shasta Ballfields major renovation (Bethel SD)	1
B27	Willamette HS turf field replacement (Bethel SD)	1
B28	A2 Channel to Meadowlark Prairie Trail (Trails Plan #C9)	2
B29	Farm Belt Trail connection from Hwy 99 (Metro Wastewater Poplar Plantation) to A2 Channel	1/2/3
B30	Kalapuya High School to Dragonfly Bend trail (Trails Plan #38)	2
B31	A-3 Channel Trail development (Trails Plan #27)	3
B32	Bertelsen Nature Park trail development (Trails Plan #26)	3
B33	Bethel Community Park running trail (Trails Plan #44)	2
B34	Golden Gardens Park running trail (Trails Plan #30)	3
B35	West Eugene Wetlands at Greenhill to Fern Ridge Reservoir/ Fir Butte Road trail development (Trails Plan #29)	2/3
B36	Meadowlark Prairie to Hwy 126 shared-use trail (Bethel portion of Trails Plan #C1)	3
B37	Murin Street path connection (TSP)	3
B38	Fern Ridge West path connection at Royal (TSP)	3
B39	Eugene Recreational Walking Routes Planning/ Neighborhood Greenways: Bethel	1
B40	Echo Hollow Pool expansion/ remodel	1
B41	Petersen Barn expansion/ remodel	2
Total Planning Area Approximate Project Costs= \$70.7 million		

DRAFT Prioritized Capital Project List

City Central Planning Area

11/21/2016

1= 1-5yrs
2= 6-10 yrs
3= beyond

Project #	Project Description	DRAFT Priority
C1	Lincoln School Park renovation	1
C2	Scobert Gardens renovation	1
C3	Sladden Park renovation	1
C4	Washington/Jefferson Park master plan and renovation	2/3
C5	Fairmount Park rehabilitation	3
C6	Monroe Park rehabilitation	2
C7	Skinner Butte Park rehabilitation	3
C8	Skinner Butte Park habitat restoration	1/2
C9	Maurie Jacobs and Skinner Butte Park lighting improvements	1/2
C10	South Bank Path realignment and lighting (EWEB to Frohnmyer Bridge)	1
C11	Downtown play area to serve CCa	1
C12	Increase access along High Street (from 19th to the Ruth Bascom Riverfront Path) to improve access between Amazon Park and river to serve CCb and SEa	1
C13	Acquire Riverfront Park at former EWEB site to serve CCa	1
C14	Riverfront Park at former EWEB site to serve CCa	1/2/3
C15	City Central dog park (location TBD)	2
C16	Park Blocks renovations	1
C17	River House Community Garden Rehabilitation	1
C18	Whiteaker Community Garden Rehabilitation	1
C19	Skinner City Farm Community Garden Rehabilitation	2
C20	Owen Rose Garden Management Plan	2
C21	Owen Rose Garden rehabilitation	3
C22	Washington/Jefferson Park basketball court rehabilitation	1
C23	Maurie Jacobs Field rehabilitation	2
C24	South Bank running trail from Greenway Bridge to DeFazio Bridge (Trails Plan #32)	1
C25	Skinner Butte Park pedestrian trails (Trails Plan #43)	1/2
C26	South Bank Path feasibility study for riverfront path continuation in vicinity of Walnut Station	3
C27	Washington Jefferson Park lighting improvements	2/3
C28	Jefferson Park Improvements	3
C29	Eugene Recreational Walking Routes Planning/ Neighborhood Greenways: City Central	2
C30	Campbell Community Center expansion/ remodel	1
C31	River House Outdoor Center expansion/ remodel	1
C32	Lamb Cottage Improvements	3
C33	Shelton-McMurphey Johnson House Improvements	3
C34	Kaufman Center Improvements	3
Total Planning Area Approximate Project Costs= \$33.4 million		

DRAFT Prioritized Capital Project List
River Road/ Santa Clara Planning Area

11/21/2016

1= 1-5yrs
2= 6-10 yrs
3= beyond

Project #	Project Description	DRAFT Priority
RS1	Acquire 5 new neighborhood park sites in underserved areas (RSc; RSd; RSe; RSg; RSh)	1/2/3
RS2	Santa Clara Community Park acquisition	1/2/3
RS3	Bobolink Park development	3
RS4	Ferndale Park development	1
RS5	Lone Oak Park development	2
RS6	Ruby Park development	1
RS7	Santa Clara Community Park development	1/2/3
RS8	Build 5 new neighborhood park sites in underserved areas (RSc; RSd; RSe; RSg; RSh)	3
RS9	Terra Linda Park development	2
RS10	Wendover Park development	3
RS11	Bramblewood Park rehabilitation and nature trail development	3
RS12	Walnut Grove Park rehabilitation	3
RS13	West Bank Park playground(s) to serve RSe and RSh	1
RS14	Improve access to Arrowhead Park from RSa	1
RS15	Improve access to Spring Creek Elementary School from RSb	1
RS16	RR/SC community garden (location TBD)	1
RS17	RR/SC dog park (location TBD)	1
RS18	RR/SC spray play at Santa Clara Community Park	3
RS19	Kelly MS turf field replacement (4J)	2
RS20	Madison MS turf field replacement (4J)	1
RS21	North Eugene HS turf field replacement (4J)	2
RS22	Acquire riverfront property between Beltline and Hileman Landing to continue West Bank Path and provide a connected corridor north of Beltline and south of Hileman Landing (Trails Plan #C11)	1/2/3
RS23	UGB/West Bank Path Continuation north of Beltline, south of Wilkes (Trails Plan #C11)	1
RS24	UGB/West Bank Path continuation north of Wilkes, south of Hileman Landing (Trails Plan	3
RS25	Acquire and Build Farm Belt Trail connection from Hileman Landing to Hwy 99 (Metro Wastewater Poplar Plantation) (Santa Clara portion of Trails Plan #C10)	1/2/3
RS26	Santa Clara Community Park running trail (Trails Plan #C37)	1
RS27	Hansen Lane path connection to West Bank Path (TSP)	2
RS28	McClure Lane path connection to West Bank Path (TSP)	2
RS29	Arbor Drive path connection to West Bank Path (TSP)	2
RS30	West Bank Path Completion (TSP)	2
RS31	West Bank Path rehabilitation	2
RS32	West Bank lighting improvements	1
RS33	West Bank Path running trail (Trails Plan #31)	3
RS34	Eugene Recreational Walking Routes Planning/ Neighborhood Greenways: River Road/ Santa Clara	1
RS35	New multipurpose community center and pool facility	2/3
	Total Planning Area Approximate Project Costs= \$66 million	

DRAFT Prioritized Capital Project List

South East Planning Area

11/21/2016

1= 1-5yrs
2= 6-10 yrs
3= beyond

Project #	Project Description	DRAFT Priority
SE1	Acquire two new neighborhood park sites in underserved areas (SEb; SEf)	3
SE2	Civic Stadium Park development to serve CCb and SEa	3
SE3	Build two new neighborhood park sites in underserved areas (SEb; SEf)	3
SE4	Tugman Park renovation	1/2
SE5	University Park renovation	1
SE6	Westmoreland Park master plan, renovation and lighting	2/3
SE7	Amazon Park rehabilitation	3
SE8	Frank Kinney Park rehabilitation	3
SE9	Laurel Hill Park rehabilitation	2
SE10	Shadow Wood Park rehabilitation	3
SE11	Washington Park rehabilitation	2
SE12	Wayne Morse Family Farm rehabilitation	2
SE13	Amazon Creek habitat restoration	1/2/3
SE14	Amazon Headwaters habitat restoration	2/3
SE15	Coryell Ridge habitat restoration	1/2/3
SE16	Habitat renovation in Amazon ash forest and wet prairie sites	1/2
SE17	Hendricks Park habitat restoration	3
SE18	Moon Mountain habitat restoration	2
SE19	South Eugene Meadows habitat restoration	1/2
SE20	Suzanne Arlie habitat restoration	1/2
SE21	Tugman Park habitat restoration	2
SE22	Amazon Path lighting improvements	1/2
SE23	Increase access to Amazon Park to serve SEb	1
SE24	Wayne Morse Family Farm nature play to serve SEb	2
SE25	Hendricks Park nature play to serve SEc	2
SE26	Laurelwood Golf Course master plan and renovation	3
SE27	Amazon Park Community Garden rehabilitation	1
SE28	Hendricks Park Rhododendron Garden management plan and rehabilitation	1/2/3
SE29	Spencer Butte Challenge Course rehabilitation	2
SE30	Hendricks Park rehabilitation	2/3
SE31	South Eugene HS turf field replacement (4J)	2
SE32	Spencer Butte turf field replacement (4J)	1
SE33	Jefferson ATA turf field replacement (4J)	1
SE34	Westmoreland Graham field renovation	2
SE35	Washington Park tennis court renovation	2
SE36	Westmoreland Park tennis court renovation	1
SE37	Spur and neighborhood connector trails in various locations (Trails Plan #5, 7, 8, 9, 10, 13, 15, 16)	2/3
SE38	Moon Mountain to 30th Avenue trail connector loop (Trails Plan #21)	3
SE39	Ribbon Trail to Bloomberg Park trail (Trails Plan #22)	2/3
SE40	Suzanne Arlie Park to 30th Avenue trail (Trails Plan #C7)	2/3
SE41	30th Avenue to Moon Mountain Park trail (Trails Plan #C8)	2/3

Project #	Project Description	DRAFT Priority
SE42	Moon Mountain to Willamette River basin trail (Trails Plan #C12)	2/3
SE43	South Eugene Meadows pedestrian trail (Trails Plan #3)	1
SE44	South Eugene Meadows to Ridgeline Trail at Willamette Street (Trails Plan #4)	2
SE45	Spur and neighborhood connector trails in various locations (Trails Plan #11, 14, 17)	1
SE46	Spur and neighborhood connector trails in various locations (Trails Plan #12b)	3
SE47	Spencer Butte Park west side pedestrian trail (Trails Plan #12a)	1
SE48	Spencer Butte Park barrier-free trail (Trails Plan #39)	2
SE49	Suzanne Arlie Park Ridgeline Trail extension (Trails Plan #18)	1
SE50	Suzanne Arlie Park connector trails and trailhead (Trails Plan #C19)	2
SE51	Upper Amazon (Rexius) running trail renovation (Trails Plan #42)	1
SE52	Moon Mountain Park shared-use trail and trailhead (Trails Plan #20)	2
SE53	Spring Boulevard Path from Central to East 30th (TSP)	1
SE54	West Amazon Drive Path from Martin (TSP)	3
SE55	Wayne Morse habitat restoration	2/3
SE56	Hendricks Park lighting improvements	3
SE57	Eugene Recreational Walking Routes Planning/ Neighborhood Greenways: Southeast Eugene	2
SE58	Amazon Community Center expansion/ remodel	3
SE59	Westmoreland Community Center expansion/ remodel	3
SE60	Laurelwood Golf Course buiding improvements	3
SE61	Washington Park Annex improvements	3
SE62	Wayne Morse Ranch building improvements	3
SE63	Amazon Pool cover and building upgrades	
	<i>Total Planning Area Approximate Project Costs= \$50.7 million</i>	

DRAFT Prioritized Capital Project List

South West Planning Area

11/21/2016

1= 1-5yrs

2= 6-10 yrs

3= beyond

Project #	Project Description	DRAFT Priority
SW1	Acquire 3 new neighborhood parks in underserved areas (Swa; SWc; SWg)	2/3
SW2	Hawkins Heights Park development	3
SW3	Mattie Reynolds Park development	1
SW4	Warbling Creek Park development	2
SW5	Build 3 new neighborhood parks in underserved areas (Swa; SWc; SWg)	3
SW6	Berkeley Park renovation	1
SW7	Churchill Sports Park renovation	2
SW8	MLK Jr Park renovation	1
SW9	Skyview Park rehabilitation	3
SW10	Murray Hill habitat restoration	2
SW11	Wild Iris Ridge habitat restoration	1/2
SW12	Southwest spray play (location TBD)	3
SW13	Playground near Amazon channel to serve SWd	1
SW14	Melvin Miller nature play to serve SWg	1
SW15	Southwest dog park (location TBD)	2
SW16	Matthews community garden rehabilitation	1
SW17	Churchill HS turf field replacement (4J)	2
SW18	Churchill HS tennis court renovation (4J)	1
SW19	Berkeley Park to Fern Ridge Path connector trail	1
SW20	Murray Hill to Hwy 126 trail (South West portion of Trails Plan #C1)	3
SW21	Willow Creek Rd to West 11th Ave trail (Trails Plan #C2)	3
SW22	Murray Hill to Wild Iris Ridge trail (Trails Plan #C3)	3
SW23	Wild Iris Ridge to Fern Ridge Path trail (Trails Plan #C4)	1
SW24	Wild Iris Ridge to Blanton Road and South Eugene Meadows trail (Trails Plan #C5)	1/2/3
SW25	Lorane Hwy to Videra Creek trail (Trails Plan #C6)	3
SW26	C1 and C2 connector trail (Trails Plan #C13)	3
SW27	Wild Iris Ridge (south end) shared-use trail (Trails Plan #2)	2
SW28	Melvin Miller pedestrian trail (Trails Plan #35)	3
SW29	Videra Creek pedestrian trail (Trails Plan #36)	3
SW30	Murray Hill shared-use trail (Trails Plan #41)	2
SW31	Fern Ridge Path lighting improvements	1
SW32	Eugene Recreational Walking Routes Planning/ Neighborhood Greenways: Southwest Eugene	1
SW33	New multipurpose community center and pool facility	2/3
Total Planning Area Approximate Project Costs= \$52 million		

DRAFT Prioritized Capital Project List
Willakenzie Planning Area

11/21/2016

1= 1-5yrs
2= 6-10 yrs
3= beyond

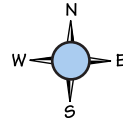
Project #	Project Description	DRAFT Priority
W1	Sheldon Sports Park renovation	3
W2	Acquire 4 new neighborhood park sites in underserved areas (Wb; Wc; Wf; Wh)	2/3
W3	Striker Field development	1/2/3
W4	Chase Commons development	1/3
W5	Wildwood Park development	3
W6	Build 4 new neighborhood park sites in underserved areas (Wb; Wc; Wf; Wh)	3
W7	Alton Baker Park (west) master plan update and renovation (including RiverPlay 2)	1/2/3
W8	Tandy Turn Park renovation	3
W9	Ascot Park rehabilitation	2
W10	Brewer Park rehabilitation	3
W11	Cal Young Sports Park rehabilitation	3
W12	Crescent Park rehabilitation	3
W13	Gilham Park rehabilitation	3
W14	Oakmont Park rehabilitation	3
W15	Acquire natural areas along the Willamette and McKenzie Rivers, north of Beltline	3
W16	Alton Baker Park Canoe Canal restoration	2/3
W17	Whilamut Natural Area of Alton Baker Park master plan update and implementation	1/2/3
W18	Alton Baker lighting improvements	1/2
W19	Ascot Park playground development	3
W20	East Bank Park playground(s) to serve Wi	3
W21	Gillespie Butte nature play to serve Wg	3
W22	Increase access to Bond Lane Park from Wd	1
W23	Increase access to Sheldon Sports Park from We	1
W24	Increase access to Bond Lane Park from Wg	1
W25	Alton Baker Park Community Garden rehabilitation	1
W26	Sheldon HS turf field replacement (4J)	2
W27	Sheldon HS tennis court renovation	1
W28	Cal Young turf field replacement (4J)	1
W29	Patterson Slough trail from MLK Blvd to Garden Way (Trails Plan #28)	3
W30	Delta Ponds bridge and trail to complete loop (Trails Plan #34)	1
W31	Debrick Slough trail to connect to Good Pasture Island Rd (Trails Plan #34)	2
W32	East Bank running trail from Owosso Bridge to Delta Ponds (Trails Plan #33)	2
W33	Alton Baker Park Canoe Canal feasibility study	1
W34	East Bank Path near Beltline to Armitage Park feasibility study	2
W35	Sorrel Pond trail rehabilitation	2
W36	Bond Lane Park trail rehabilitation	2
W37	Canoe Canal Path rehabilitation	2
W38	North Bank Path rehabilitation	2
W39	Eugene Recreational Walking Routes Planning/ Neighborhood Greenways: Willakenzie	2
W40	Sheldon Community Center and Pool expansion/ remodel	1/3
W41	Cuthbert Amphitheater back of house improvements	3
Total Planning Area Approximate Project Costs= \$70.9 million		

Playground Equity Map

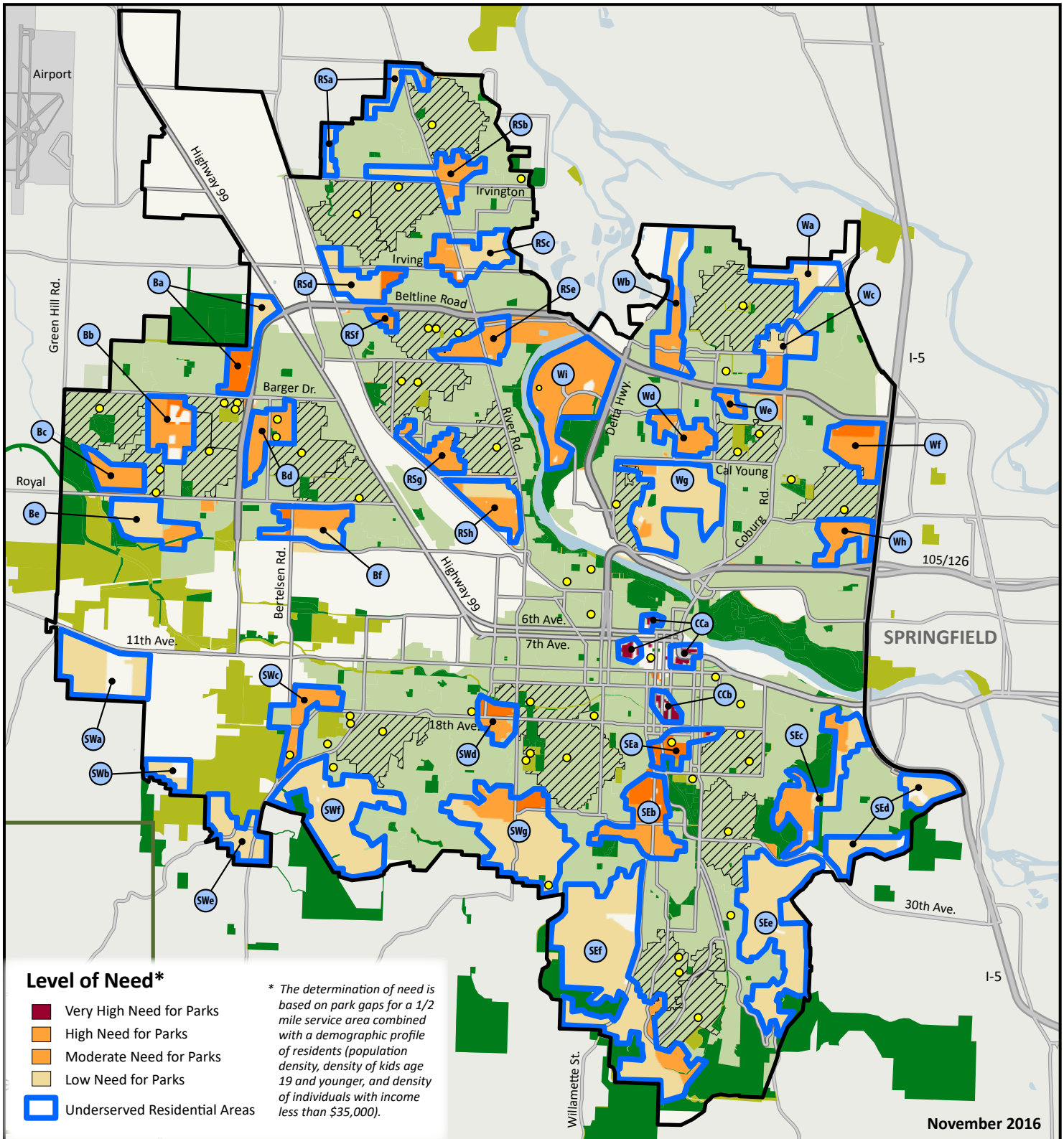
Eugene Parks and Recreation System

Legend

- School Facilities
- City of Eugene Parks
- Other Conservation Lands (non-City)
- Eugene Urban Growth Boundary (UGB)
- Half-Mile Park Service Areas
- Half-Mile School Service Areas
- Underserved Area Code



0 1/2 1 Mile
Scale



November 2016