



# JEFFERSON WESTSIDE NEIGHBORS NEWS



Collaborating | Leading | Advocating

## JWN 2019 Meetings

Tuesday nights, 6:45-9PM  
First United Methodist  
Church, 1376 Olive St.  
Bring a snack to share!  
Agendas posted in eNews,  
Facebook, and  
[jwneugene.org](http://jwneugene.org). *Clip and  
save the schedule!*

### Schedule

February 12  
March 12  
April 9 (Board Elections)  
May 14  
June/July/August (No  
general meetings; watch for  
announcements on the  
JWN annual picnic and  
other events.)  
September 10  
October 8  
November 12  
December (No general  
meeting; date/time for the  
JWN holiday party  
TBD!)



## JWN eNews

Sign up for the JWN monthly  
eNews and special events/alerts  
at [jwneugene.org/news/  
newsletter](http://jwneugene.org/news/newsletter) or email  
[jwneugene@gmail.com](mailto:jwneugene@gmail.com).



## Step Out: Your Neighbors are Waiting to Welcome You

*Ted M. Coopman, JWN Chair*

Every JWN general meeting begins with this statement:

*"This meeting is intended to be a place for the respectful and civil exchange of ideas and information. We ask all in attendance to honor this ethic by keeping questions and comments civil, concise and without commentary of a personal nature."*

Neighborhood meetings are friendly, fun, and engaging spaces to get to know your neighbors, broaden your perspective, and get outside your filter-bubble. Join us!

### *What Happens at the General Meetings?*

The first 15 minutes is set aside for enjoying a snack potluck and informal conversation with your neighbors. Next are announcements, issues, and concerns. JWN leaders then give brief reports about JWN activities, such as what is happening in our parks, updates on projects, and other information.

*(continued on page 2)*

## Call for Volunteers

Do you have a few hours a month you can dedicate to your neighborhood? Below are ongoing and potential new JWN projects. Interested? Contact the JWN at [jwneugene@gmail.com](mailto:jwneugene@gmail.com).

- ★ *Neighborhood Matching Grants.* Match property owner money and neighbor labor to city funds to repair sidewalks and fill potholes in alleys.
- ★ *Create a mural* on the back fence of Charnel Mulligan Park.
- ★ *Organize trash patrols and graffiti abatement.* We provide reacher-grabbers, buckets, and paint (or bring your own), along with volunteer vests.
- ★ *Go door-to-door* telling your neighbors about the JWN. We provide JWN vests and materials.
- ★ *Emergency Preparedness.* Coordinate with the city on preparing for and responding to a major emergency.
- ★ *Park Groups.* Volunteer your time to keep the JWN parks clean, green, and safe. One project: work with Parks to organize summer activities.
- ★ *Advisory Boards.* Take the lead, as with a new Business and Non-Profit Advisory Board.
- ★ *Homelessness.* Connect with our affiliated Westside Shelter Search Team.
- ★ *Coordinate a plastics recycling program.*
- ★ *Organize a block party* for your street.

Want to keep informed on opportunities to help out? Contact [jwneugene@gmail.com](mailto:jwneugene@gmail.com) to join the volunteer mailing list.

[jwneugene.org](http://jwneugene.org)

*(continued from page 1)*

Local officials such as our Ward 1 Councilor Emily Semple, Mayor Vinis, police and fire chiefs, and representatives of city departments such as Parks and Public Works or state level departments like ODT, regularly attend. We usually have presentations on issues of neighborhood interest or concern that may be led by city staff, nonprofits, interest groups, or just groups of neighbors. We've hosted candidate forums for elected positions, for/against presentations on ballot initiatives, and information sessions about various topics including the Oregon State Extension Services, emergency preparedness, and EWEB programs.

We often organize forums and group discussions to get feedback on specific neighborhood issues, what the JWN should be working on, and input on projects in progress.

So step out, attend a JWN general meeting, connect with your neighbors, and find out what's going on in your neighborhood.

*Join us at our February 12 meeting for a discussion with Mayor Vinis and a session with the Renter's Task Team from the city's Housing Policy Board.*



*Track Town Pizza + games at January meeting*



## JWN Parks get a splash of color for spring!

On a grey, cold day at the end of December, a small group of JWN neighborhood volunteers planted hundreds of spring bulbs that will bloom February through

May at Charnel Mulligan Park on 17<sup>th</sup> & Charnelton, The Wayside Park at 15<sup>th</sup> and Charnelton, and the Jefferson Dog Park at Jefferson Alley and 16<sup>th</sup>. Parks and Open Spaces staff provided the crocus, tulip, daffodil, and other types of narcissus bulbs. Thank you City POS and neighborhood volunteers for making our parks more beautiful! These bulbs will bring long-lasting and maintenance-free beauty to our public spaces for years to come. Look for them this spring when visiting our parks!

## Notes from the Chair

Ted M. Coopman

In this newsletter, my comments are focused on something that has taken a lot of time and energy this year – housing.

**The JWN Board does not unilaterally oppose any development, like ADUs (accessory dwelling units).** Nor do we oppose any of the development that fits within our Jefferson Westside-Chambers Special Area Zones (SAZ) or other areas. The JWN already is the densest neighborhood (outside of student housing adjacent to UO) with the widest variety of housing types in Eugene. Our SAZs were neighbor-initiated, democratically-designed, and city-approved processes that created a balance between density and quality of life unmatched in Eugene. We opposed, and the Oregon Land Use Board of Appeals supported us, ADU rules extending to our SAZs because those areas already accommodate building multiple dwellings. While there always is room for improvement, our neighborhood already is doing more than its fair share on providing housing.

Our primary objections within the current land use debate are based on the lack of democratic process. Whether it is the state legislature or the city of Eugene, we strongly believe in the right of the general public to have substantial input into land use decisions that affect them. **The JWN City Charter and State Planning Goal #1 mandates significant public involvement in all phases of the land use process and neighborhood associations (NHA) were created to fulfill that requirement.** NHAs are not “intruding” on land use issues. We are, by law, central to them. The lesson from our two JWN SAZ processes is that neighbors are willing and able to make hard choices and do the right thing on housing and development issues.

Finally, we strenuously reject the characterization of residents or NHAs as “NIMBYs” when they question land use decisions or rule changes. Name-calling is not a productive deliberation strategy. **Democracy is grounded in making your case to the public to gain their support.** While you can “win” an argument by seeking to destroy or discredit your opponents or disenfranchise them, it is hardly ethical or just, regardless of your goals. The JWN and all NHAs are simply infrastructures for action grounded in the community’s will. Above all, community members should have a *meaningful* voice in the policies that affect them.



### JWN Board Elections: Announcing the Formation of the Nominating Committee

The annual JWN executive board elections will be held during the business portion of the April 9, 2019 General Meeting. At least one month prior to that and in accordance with JWN bylaws, the current board will designate a nominating committee, which includes one executive board member and two JWN members outside the board. The committee will publish a slate of nominees for office prior to the election.

The executive board has seven members and terms are for one full year. At least two positions will be open. If you’d like to join the board, please don’t hesitate to throw your hat into the ring. Any member of our neighborhood association may join the board (members must live or own property, or run a business, within the JWN boundaries). Don’t be afraid if you have no previous board experience; this board is a friendly group and will help orient you on the board’s tasks and activities.

If you’d like to be a member of the nominating committee or you’re interested in serving on the executive board, contact the JWN Chair at [jwneugene@gmail.com](mailto:jwneugene@gmail.com).

## Strengths, Weaknesses, Opportunities, and Challenges of the JWN

*A presentation facilitated by the JWN-affiliated Community Action Council (CAC)*

At the January 8, 2019, JWN general meeting, CAC members facilitated a discussion to identify JWN strengths, weaknesses, opportunities, and challenges (SWOC). Some of the *weaknesses and challenges*:

- ♦ Vandalism
- ♦ Lack of park access
- ♦ Cost of living
- ♦ Land use/zoning issues
- ♦ Social isolation
- ♦ Poor disaster preparedness
- ♦ Lack of/dangerous sidewalks
- ♦ Litter
- ♦ No central location for community events

In a breakout session, participants talked in small groups to identify *neighborhood strengths*, such as personal strengths and resource availability:

- ♦ Neighbors' skillsets
- ♦ Bike lanes
- ♦ People connections
- ♦ Senior perspective
- ♦ Trees
- ♦ Goodwill
- ♦ Property

Neighbors also discussed *opportunities* such as:

- ♦ Space + will to paint a mural
- ♦ Building new JWN groups
- ♦ Raising youth voices
- ♦ Neighbor empowerment
- ♦ Trash pickup initiatives
- ♦ Anti-litter education
- ♦ Low income housing
- ♦ Outreach to neighborhood and wider Eugene community
- ♦ Partnership with Whitebird/CAHOOTS
- ♦ Neighborhood security
- ♦ Increased participation on Nextdoor
- ♦ Partnership with Friends of Trees



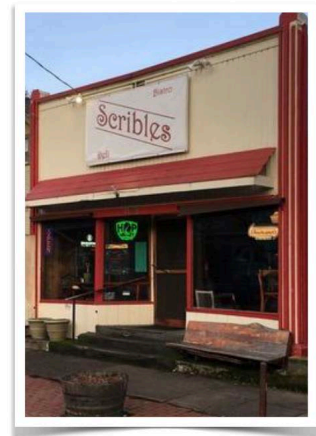
Participants expressed interest in getting together to discuss ways in which we can resolve our neighborhood weaknesses, overcome challenges, build on our existing strengths, and exploit opportunities that exist. The CAC believes most of this work can be done *directly*, neighbor-to-neighbor, block-by-block, in a way that realizes our human potential for care and mutual aid.

## Scribles Bistro & Deli

*Dave Hurst, JWN Board Member*

Scribles Bistro & Deli owners Justin Scriber and Trisha Eastlick are thrilled to join the Jefferson Westside neighborhood! An authentic deli serving toasted sandwiches, Scribles is a child- and family-friendly establishment featuring Thumann's deli meats and cheeses served on Reality Kitchen's fresh hoagies. All additional menu items are made fresh in house, including meatballs, marinara, soups, potato salad, au jus, deli oil, and sauces. There's not a fryer or a microwave in Scribles' kitchen. The menu will grow and change seasonally as the owners experiment with new sandwiches and daily specials.

Along with serving delicious sandwiches, Scribles sells meats and cheeses by the pound out of the deli case and offers a gluten-free menu and gluten-free bread. Scribles has eight beers on tap, a selection of wines, ciders, gluten free beers, sodas, and kombucha along with a full service bar. There are four TVs for viewing sporting events, as well as the NFL Ticket to view every NFL game. Justin and Trisha invite neighbors to enjoy the outdoor back patio seating area on sunny days!



1123 Monroe Street

open 11am-11pm every day

## JWN Business Profile: Q&A with Jason Waligoske, Owner, New Frontier Market

*How long has New Frontier Market been in existence?*

Frontier Market opened in the 1890s, and was renamed New Frontier Market in the 1970s. I was hired in 1997 and I bought the business in 2002.

*What is unique about New Frontier?*

We own Yep Yep Organic Farm, making us the only farm-to-shelf full service grocer in the area. Our produce standards are quite high. Our beer selection is second only to the Beer Stein and includes not only some very rare bottles, but will soon include a growler station to match our kombucha taps. Last year we brought in compostable BioBags for our produce and bulk selections, and got Sundance, Capella, Turnip the Beet Farm, Ruby and Amber's Farm, and Good Earth Farm to start using them. We also have a very good coupon for all products at any time on our website.



*New Frontier Market, Van Buren & 8th*

*In what ways has being located in this neighborhood been a positive for New Frontier?*

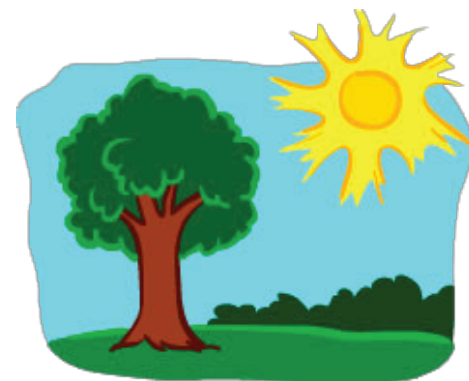
There are lots of loyal customers in the neighborhood. We've had many firsts here with the neighborhood, including, if memory serves, the first place to sell Rising Moon when it was made right up the street; the first to sell Off the Waffle when it started two doors down; and just weeks ago, the first store to stock Fisherman's Market's sauces.

*Can you highlight New Frontier's efforts to enhance or support the community?*

Ever since I wrote my first business plan for New Frontier, the mission has remained to be a shining beacon in the community. Even when things are tough financially, we've donated to entities that are important to the community, such as the Whiteaker Thanksgiving feed. When times are good, we donate to just about every good cause that happens around here, including the annual Jefferson Westside Neighbors Picnic. We have semi-monthly art displays, monthly coloring contests and weekly wine, beer, cheese tastings. We support local distributors, manufacturers and farmers as much as we can.

## Lincoln School Park Renovation Update

The Lincoln School Park renovation is on track. Most of the painted markings in the grass have faded from our walk-around last year, but the process continues. Typically, construction plans are scheduled to be completed for spring bidding and summer construction. You may have noticed surveyors in the autumn and the installation of a new basketball backboard with hoop, too. The word from Pam Bowers at the City is that everything is on schedule.





*JWN 2018 picnic Monroe Park*

## A Sampling of 2018 JWN Accomplishments

- ✓ Created Jefferson Park Dog Off Leash Area.
- ✓ Continued "Heart your Neighbor/ No Hate" yard sign campaign.
- ✓ Established a Renters Advisory Board.
- ✓ Successfully advocated for Human Rights and Neighborhood Involvement (HRNI) to acquire a commercial version of Survey Monkey software for all NHAs.
- ✓ Teamed up with new neighbors ECCares for an open house.
- ✓ Sponsored holiday party with the Lane County Historical Museum.
- ✓ Held our annual summer picnic with 300+ people attending.
- ✓ Established a Friends of Lincoln School Park group and facilitated redesign process with Parks.
- ✓ Coordinated with EPD and did outreach to curb problem behaviors in Monroe Park.
- ✓ Participated in the Housing Tools & Strategies and Clear & Objective Standards Working Groups.
- ✓ Added new affiliates Westside Shelter Search Team and the Community Action Council.

## 2019 JWN Priorities Survey Highlights

(visit [jwneugene.org](http://jwneugene.org) for complete report)

Ted M. Coopman, JWN Chair

More than 120 JWN residents completed the survey that was distributed via JWN's online outlets and Nextdoor. These survey results, combined with general meeting discussions and our SWOC analysis will help us plan our agenda for 2019. In addition, 26 of your neighbors submitted their names and email addresses to be on our volunteer list to make our 2019 action-items possible. You can add your name and help us keep the JWN a great place to live.

### *What Residents Like Most About the JWN*

1. Central location
2. Amazing tree canopy
3. Parks, the variety of people and places, architecture, friendly neighbors, and pedestrian/bike friendly

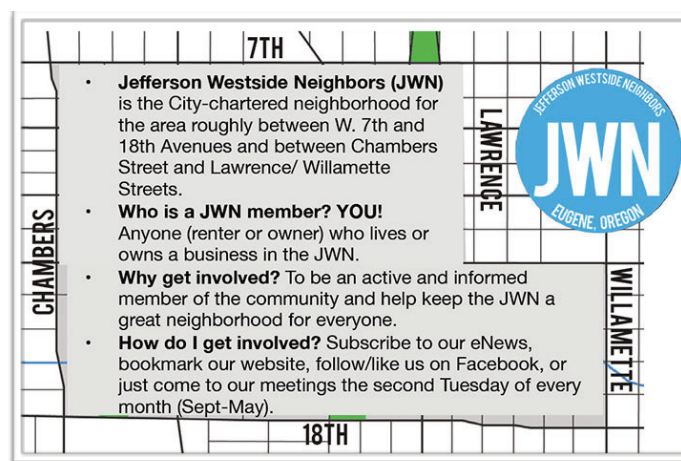
### *Concerns*

1. Public safety/property theft
2. Quality of life/litter and vandalism
3. Anti-social behavior (e.g. public drug use/smoking, belligerence)
4. Cost of living/rent/property tax assessments

### *Suggestions*

1. Stop sign at 8th and Van Buren
2. Pocket neighborhood events
3. Attract more community-based businesses

This survey offered another opportunity for people to voice their perspectives. Let us know what your issues, concerns and suggestions via email or at our general meetings.



## OPINION: Collaboration is the Answer

Tom Happy, JWN Vice Chair

**WARNING:** The leadership in the state legislature is poised to roll out unprecedented and draconian changes that will have extremely harmful impacts on our neighborhood and city. In preparation for these sweeping changes, Oregon House Speaker Tina Kotek recently disbanded the Landlord Tenant Coalition, a group that had been meeting annually for over four decades to hash out rental legislation that both sides could support. This coalition was successful in collaborating effectively, resulting in generally fair and balanced legislation. Tragically, the Speaker decided there was no longer a need to have both sides represented in the legislative process since her party has complete control of state government. As a result, there is legislation in the works (HB2004, passed; SB608, pending) intended to address housing affordability and stability that will ultimately fail due to unintended (or ignored) consequences. The biggest offense in this situation is the lack of collaboration!

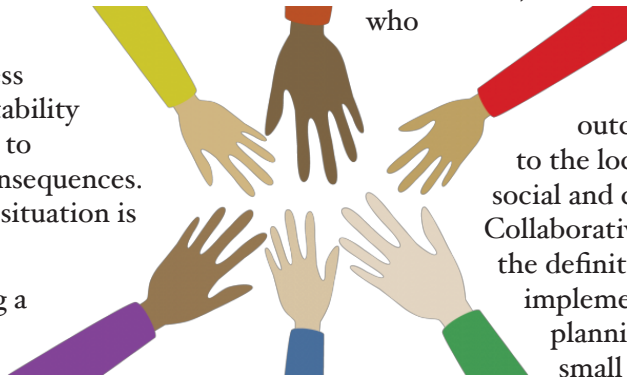
The Speaker also is pushing a new bill to effectively remove local planning control (HB2001, pending). This bill runs counter to our vaunted land use planning legislation, Senate Bill 100, passed in 1973. Goal One of SB100 is Citizen Involvement. Apparently the Speaker doesn't believe the citizens of this state deserve to have a voice in land use planning. She seems to prefer planning done *to* the people rather than planning done *with* the people.

Locally, regionally, and nationally there are interests at play working hard to eradicate the possibility of collaborating on issues that matter to us all. Beyond the legislation mentioned above, special interests and people in power are conspiring to eliminate neighborhood associations, rights to appeal land use decisions, and other voices of the people deemed to be a nuisance or hindrance.

Collaboration is the answer, not the problem. JWN has two zoning overlays that illustrate the efficacy of collaborative efforts between citizens and their government. When adopted, both overlays were hailed as successful models of collaboration by local authorities, including the city council and mayor. The recent Charnel Mulligan Park renovation project is another example of a successful collaborative effort.

By their very nature, collaborative efforts run counter to "top-down, one-size-fits-all" approaches. To quote local academician and author Peter Walker, "Collaboration is not a single process or set of goals; rather, by its nature, collaboration is defined in practice by diverse stakeholders, who including local people, make decisions about decision-making processes as well as desired outcomes in ways appropriate to the local ecology, economy, and social and cultural environments... Collaboratives involve local people in the definition, design, implementation, and evaluation of planning efforts, both large and small scale, over time; and recognize and build on the long histories of local people in specific places."

These upcoming changes ought to be a concern to all neighbors. At stake are the health and functionality of our democracy and, by extension, our neighborhoods. I urge neighbors to pay attention, stay informed, contact your legislators to voice your opinions, and volunteer with your neighborhood association. I also urge you to talk with your neighbors, and listen with humility and interest to opinions that differ from your own. If we all practice this ethic of listening to understand rather than listening to respond, then we are well on our way to learning to work together in collaboration. After all, this is OUR neighborhood, so let's collaborate to keep it awesome!

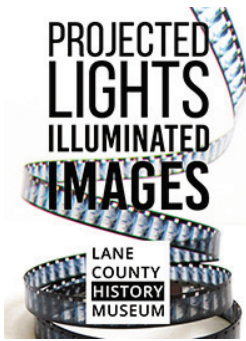


## Neighborhood Night at the Museum

*Jennifer Yeh, Membership & Volunteer Coordinator, Lane County History Museum*

The Lane County History Museum invited Jefferson Westside Neighbors to a free night at the museum in December. More than 50 people of all ages stopped by with an exciting assortment of potluck food to share. Museum Curator Faith Kreskey led museum tours of *Toys! Playthings of Lane County*, giving deeper background information, answering questions and sharing stories related to the artifacts.

In addition to exhibits, LCHM produces a historical journal and quarterly newsletter, collaborates with the



UO History Department on the monthly History Pub Lecture series, hosts a bi-monthly trivia night at 5<sup>th</sup> Street Market, welcomes school groups free of charge, invites local authors to speak, and manages interesting and engaging content on Facebook and Instagram.

Visit this valuable asset right in your own backyard. Currently on exhibit: *Would You Believe it?*, *Remembering the Great War*, *Millinery in Lane County*, *Clocks*, *Cushman and Acme* and a small remaining section of the *Toys!* exhibit. The latest exhibit, *Projected Lights Illuminated Images*, just opened in January and traces the history of photographic technology and the history of film in Lane County.

Keep up to date on events and learn about local history! Follow the LCHM on Facebook or Instagram and check out the website at [www.lchm.org](http://www.lchm.org). *Hours: Tuesday – Saturday 10AM-4PM. Cost: Seniors \$3, Adults \$5, Youth (15-17) \$1, and 14 and under and Museum Members are free.*

PERMIT NO. 377  
EUGENE, OR 97401  
US POSTAGE PAID  
PRESORTED STANDARD



JEFFERSON WESTSIDE NEIGHBORS  
% Neighborhood Program  
99 W 10th Avenue  
Eugene, OR 97401